



The Occupier

Community Relations  
Western House  
1 Holbrook Way  
Swindon  
SN1 1BD

**Network Rail 24-hour  
National Helpline  
03457 11 41 41**

25 January 2021

Our reference: **BHL 41m 03c - 42m 07c**

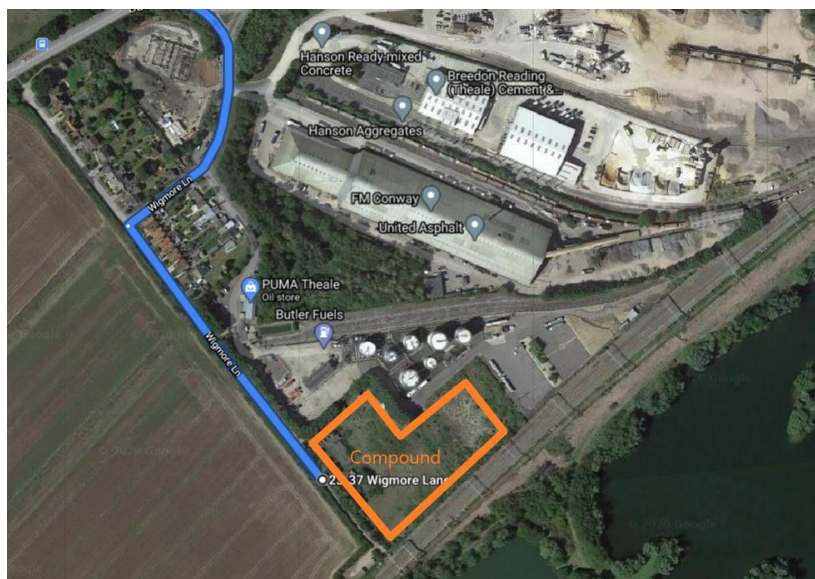
Dear neighbour,

### **Network Rail compound on Wigmore Lane, Theale**

We wanted to let you know about work we have planned in your area in the coming months and how this might affect you.

We will be renewing the railway track from near Wigmore Lane level crossing to beyond Theale station, ensuring this line continues to run smoothly for years to come. We will set up a compound in the field between Butler Fuels depot and the track so we can provide parking, welfare units and storage for staff, vehicles and materials needed for this work.

Below is a map showing where the compound will be and how we plan to access the site. We know this is close to your home and we will work with our staff and suppliers to minimise disruption to you wherever possible, including arranging deliveries during daylight hours and avoiding use of the A4 junction into Wigmore Lane wherever possible.



**Safety** – See something suspicious? Contact British Transport Police 0800 405040.



Below are the dates and times we will be working on the railway, though you may start noticing us in the area from 17 March as we begin to receive deliveries, clear back vegetation in the field and set up the compound. We will be in the area until early July, but unless stated below will not be working beyond 6pm. Exact dates may vary as this project develops but we will let you know of any changes we feel might affect you.

#### Preparation of worksite

Saturday 3 – Sunday 4 April	1 overnight shift, from 11pm – 9am
Saturday 10 – Sunday 11 April	1 overnight shift, from 11pm – 9am
Saturday 17 – Sunday 18 April	1 overnight shift, from 11pm – 9am
Monday 19 – Friday 23 April	Overnight shifts each day, from 10pm – 6am
Saturday 24 – Sunday 25 April	1 overnight shift, from 11pm – 9am

#### Track renewal work

Friday 30 April – Monday 3 May	24 hour shifts, from 10pm Friday – 5.30am Monday
Friday 7 – Monday 10 May	24 hour shifts, from 10pm Friday – 5.30am Monday

#### Follow-up work

Saturday 15 – Sunday 16 May	1 overnight shift, from 11pm – 9am
Saturday 22 – Sunday 23 May	1 overnight shift, from 11pm – 9am
Saturday 29 – Sunday 30 May	1 overnight shift, from 11pm – 9am
Saturday 5 – Sunday 6 June	1 overnight shift, from 11pm – 9am
Saturday 19 – Sunday 20 June	1 overnight shift, from 11pm – 9am

The level crossing at the end of Wigmore Lane will be closed while we work to allow our engineering trains access to the track. We apologise for any inconvenience this may cause and will ensure the crossing remains open wherever possible when we're not working on the track.

This work will be noisy at times and we would like to apologise in advance for any disturbance we may cause. We are renewing over a mile of track here and so won't be near your home the whole time, but we will work closely with our teams to minimise noise as much as possible and to work with you in mind. If you want to know more about track renewals, how we do it and the equipment we use you can find more information at [www.networkrail.co.uk/running-the-railway/our-routes/western/western-track-renewals](http://www.networkrail.co.uk/running-the-railway/our-routes/western/western-track-renewals).

If you have any questions or concerns about this work you can also call us any time on 03457 11 41 41 or visit [www.networkrail.co.uk/contactus](http://www.networkrail.co.uk/contactus). Thank you for your patience as we work to keep the railway serving your community for years to come.

Yours faithfully,

**Joe Hill**  
Community Relations Executive

**Safety** – See something suspicious? Contact British Transport Police 0800 405040.